



# COMPUTER FREEHOLD REGISTER UNDER LAND TRANSFER ACT 1952



Search Copy

  
R.W. Muir  
Registrar-General  
of Land

**Identifier** 207816  
**Land Registration District** South Auckland  
**Date Issued** 19 May 2005

## Prior References

SA54D/829

---

**Estate** Fee Simple  
**Area** 2125 square metres more or less  
**Legal Description** Lot 13 Deposited Plan 350755

## Proprietors

Scenic Ventures Limited

## Interests

Subject to Section 8 Atomic Energy Act 1945

Subject to Section 3 Petroleum Act 1937

Subject to Section 3 Geothermal Energy Act 1953

Subject to Sections 5 and 261 Coal Mines Act 1979

Subject to Sections 6 and 8 Mining Act 1971

Appurtenant hereto are rights to convey water specified in Easement Certificate B192889.3 - 18.3.1994 at 2.14 pm

Subject to a right to convey water over parts marked Q on DP 350755 specified in Easement Certificate B192889.3 - 18.3.1994 at 2.14 pm

The easements specified in Easement Certificate B192889.3 are subject to Section 243 (a) Resource Management Act 1991

Appurtenant hereto is a right to convey water created by Transfer B290310.3 - 15.8.1995 at 2.52 pm

Appurtenant hereto is a right to convey water specified in Easement Certificate B290310.4 - 15.8.1995 at 2.52 pm

Appurtenant hereto is a right to convey water created by Transfer B393967 - 24.1.1997 at 12.15 pm

The easements created by Transfer B393967 are subject to Section 243 (a) Resource Management Act 1991 - see DPS 68414

5806407.2 Partial Surrender of the right to convey water specified in Easement Certificate B192889.3 - 20.11.2003 at 9:00 am

6099250.2 Mortgage to ANZ National Bank Limited - 2.8.2004 at 9:00 am

6426312.2 Consent Notice pursuant to Section 221 Resource Management Act 1991 - 19.5.2005 at 9:00 am

Subject to a right to drain water over part marked Y on DP 350755 created by Easement Instrument 6426312.4 - 19.5.2005 at 9:00 am

Appurtenant hereto is a right of way and rights to convey water, electricity and telecommunications created by Easement Instrument 6426312.4 - 19.5.2005 at 9:00 am

The easements created by Easement Instrument 6426312.4 are subject to Section 243 (a) Resource Management Act 1991

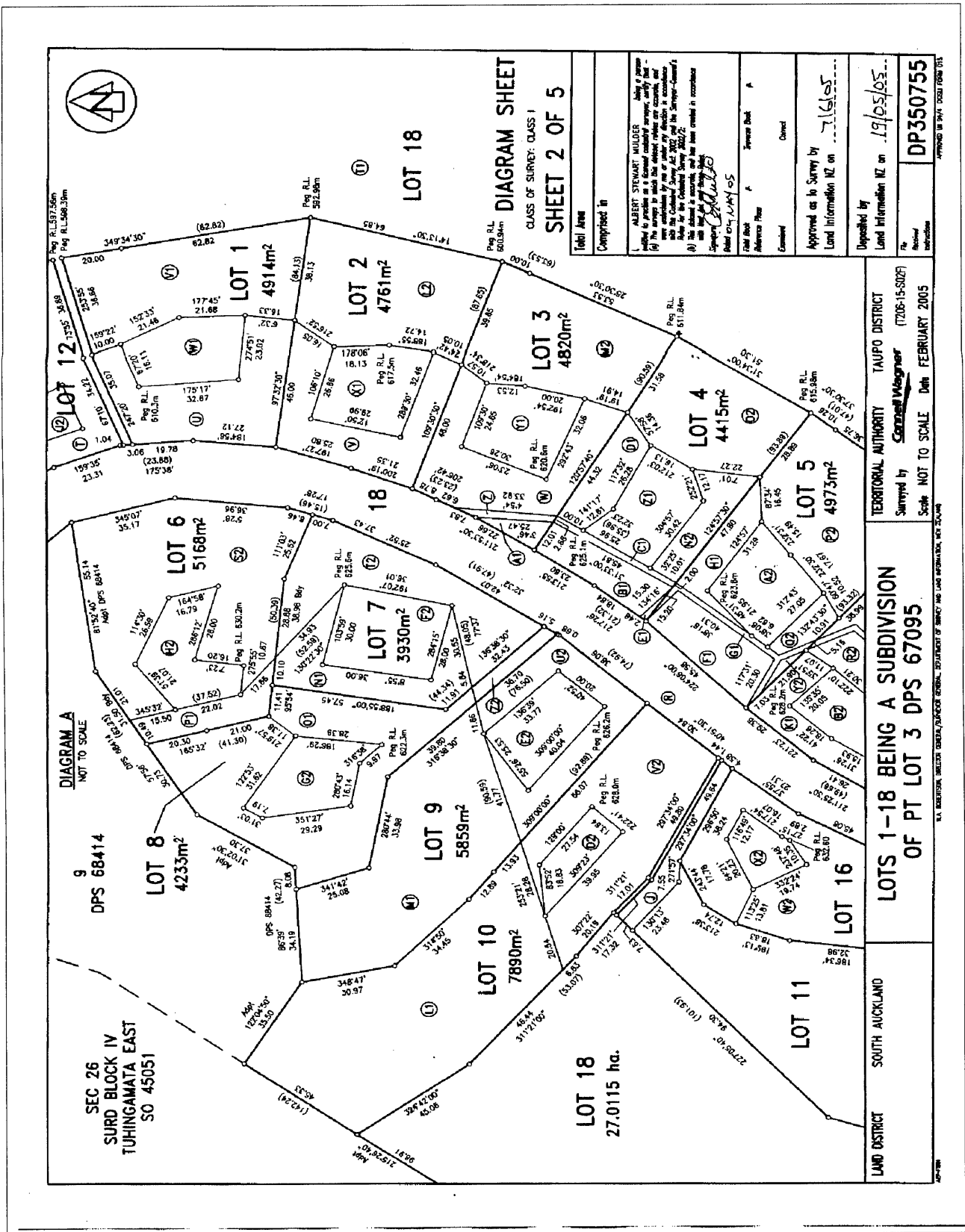
Land Covenant in Easement Instrument 6426312.6 - 19.5.2005 at 9:00 am

Land Covenant in Easement Instrument 6426312.7 - 19.5.2005 at 9:00 am

Fencing Covenant in Easement Instrument 6426312.7 - 19.5.2005 at 9:00 am

6426312.8 Encumbrance to Grandview Residents Association Incorporated - 19.5.2005 at 9:00 am





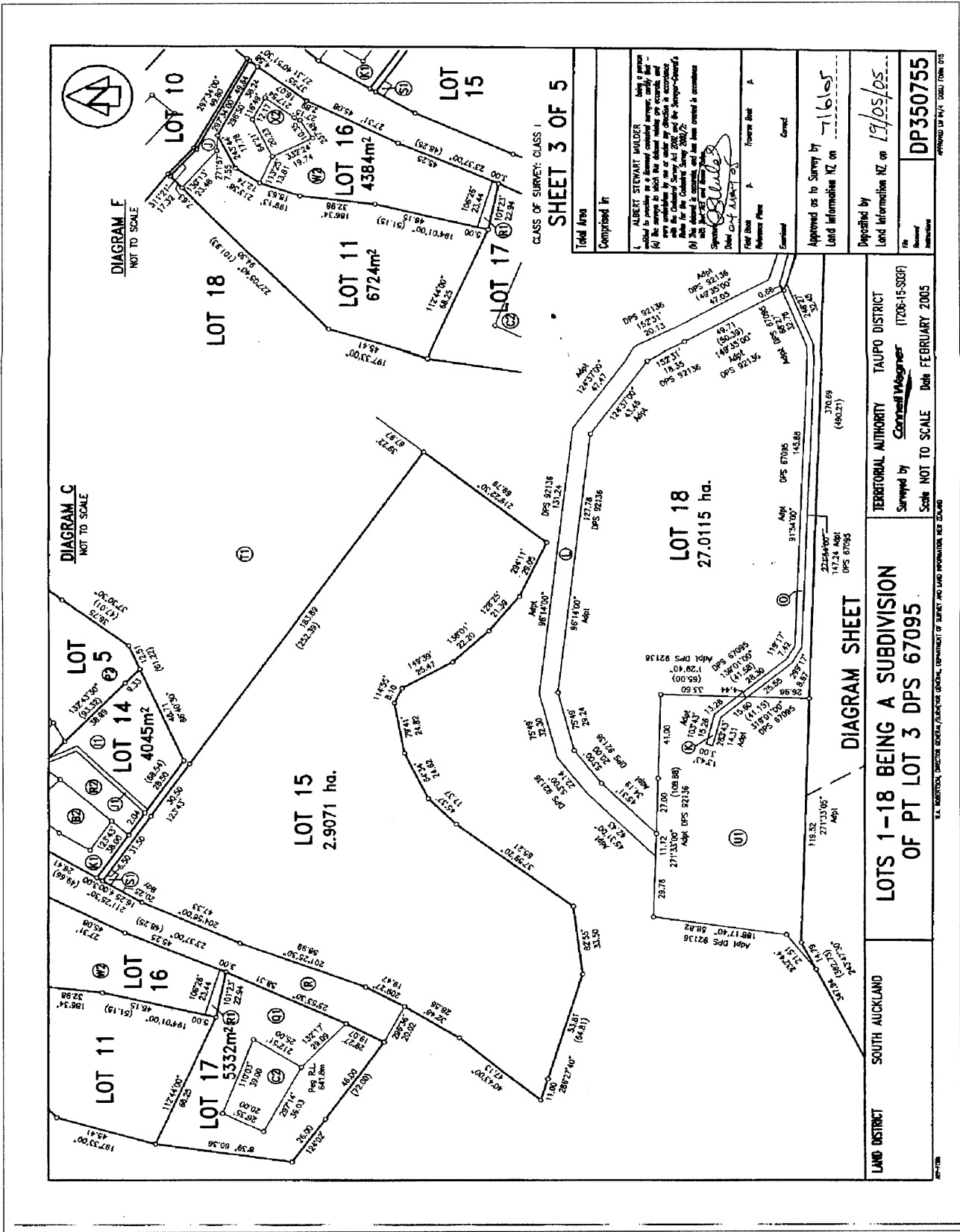
Completed in	Albert Stewart Mulder
Class of Survey	CLASS 1
Sheet	SHEET 2 OF 5
Surveyor	Albert Stewart Mulder
Reference Plan	None
Consent	Consent
Approved on	19/05/05
Land Information NZ on	19/05/05
Deposited by	Albert Stewart Mulder
Land Information NZ on	19/05/05
File Number	DP350755

LAND DISTRICT SOUTH AUCKLAND  
 TAUPŌ DISTRICT (7206-15-S07)  
 Surveyed by **Consent Waiver**  
 Scale NOT TO SCALE Date FEBRUARY 2005

LOTS 1-18 BEING A SUBDIVISION OF PT LOT 3 DPS 67095

LAND DISTRICT SOUTH AUCKLAND

1:1. METRIC UNITS ONLY. UNLESS OTHERWISE SPECIFIED, ALL DIMENSIONS ARE IN METERS. DISTANCE MEASUREMENTS ARE TO THE CENTRE OF THE LOT.



CLASS OF SURVEY: CLASS 1  
**SHEET 3 OF 5**  
 Total Area  
 Comprised in

1. ALBERT STEWART WILDER being a person entitled to practice as a Licensed Land Surveyor, certify that -  
 (a) the survey is correct in accordance with the provisions of the Land Survey Act 2008 and the regulations made thereunder and in accordance with the provisions of the Land Survey Act 1980 and the regulations made thereunder;  
 (b) the land is correctly surveyed and the area is correctly ascertained;  
 (c) the survey is correct in accordance with the provisions of the Land Survey Act 2008 and the regulations made thereunder and in accordance with the provisions of the Land Survey Act 1980 and the regulations made thereunder;  
 (d) the survey is correct in accordance with the provisions of the Land Survey Act 2008 and the regulations made thereunder and in accordance with the provisions of the Land Survey Act 1980 and the regulations made thereunder;  
 (e) the survey is correct in accordance with the provisions of the Land Survey Act 2008 and the regulations made thereunder and in accordance with the provisions of the Land Survey Act 1980 and the regulations made thereunder;  
 (f) the survey is correct in accordance with the provisions of the Land Survey Act 2008 and the regulations made thereunder and in accordance with the provisions of the Land Survey Act 1980 and the regulations made thereunder;  
 (g) the survey is correct in accordance with the provisions of the Land Survey Act 2008 and the regulations made thereunder and in accordance with the provisions of the Land Survey Act 1980 and the regulations made thereunder;  
 (h) the survey is correct in accordance with the provisions of the Land Survey Act 2008 and the regulations made thereunder and in accordance with the provisions of the Land Survey Act 1980 and the regulations made thereunder;  
 (i) the survey is correct in accordance with the provisions of the Land Survey Act 2008 and the regulations made thereunder and in accordance with the provisions of the Land Survey Act 1980 and the regulations made thereunder;  
 (j) the survey is correct in accordance with the provisions of the Land Survey Act 2008 and the regulations made thereunder and in accordance with the provisions of the Land Survey Act 1980 and the regulations made thereunder;  
 (k) the survey is correct in accordance with the provisions of the Land Survey Act 2008 and the regulations made thereunder and in accordance with the provisions of the Land Survey Act 1980 and the regulations made thereunder;  
 (l) the survey is correct in accordance with the provisions of the Land Survey Act 2008 and the regulations made thereunder and in accordance with the provisions of the Land Survey Act 1980 and the regulations made thereunder;  
 (m) the survey is correct in accordance with the provisions of the Land Survey Act 2008 and the regulations made thereunder and in accordance with the provisions of the Land Survey Act 1980 and the regulations made thereunder;  
 (n) the survey is correct in accordance with the provisions of the Land Survey Act 2008 and the regulations made thereunder and in accordance with the provisions of the Land Survey Act 1980 and the regulations made thereunder;  
 (o) the survey is correct in accordance with the provisions of the Land Survey Act 2008 and the regulations made thereunder and in accordance with the provisions of the Land Survey Act 1980 and the regulations made thereunder;  
 (p) the survey is correct in accordance with the provisions of the Land Survey Act 2008 and the regulations made thereunder and in accordance with the provisions of the Land Survey Act 1980 and the regulations made thereunder;  
 (q) the survey is correct in accordance with the provisions of the Land Survey Act 2008 and the regulations made thereunder and in accordance with the provisions of the Land Survey Act 1980 and the regulations made thereunder;  
 (r) the survey is correct in accordance with the provisions of the Land Survey Act 2008 and the regulations made thereunder and in accordance with the provisions of the Land Survey Act 1980 and the regulations made thereunder;  
 (s) the survey is correct in accordance with the provisions of the Land Survey Act 2008 and the regulations made thereunder and in accordance with the provisions of the Land Survey Act 1980 and the regulations made thereunder;  
 (t) the survey is correct in accordance with the provisions of the Land Survey Act 2008 and the regulations made thereunder and in accordance with the provisions of the Land Survey Act 1980 and the regulations made thereunder;  
 (u) the survey is correct in accordance with the provisions of the Land Survey Act 2008 and the regulations made thereunder and in accordance with the provisions of the Land Survey Act 1980 and the regulations made thereunder;  
 (v) the survey is correct in accordance with the provisions of the Land Survey Act 2008 and the regulations made thereunder and in accordance with the provisions of the Land Survey Act 1980 and the regulations made thereunder;  
 (w) the survey is correct in accordance with the provisions of the Land Survey Act 2008 and the regulations made thereunder and in accordance with the provisions of the Land Survey Act 1980 and the regulations made thereunder;  
 (x) the survey is correct in accordance with the provisions of the Land Survey Act 2008 and the regulations made thereunder and in accordance with the provisions of the Land Survey Act 1980 and the regulations made thereunder;  
 (y) the survey is correct in accordance with the provisions of the Land Survey Act 2008 and the regulations made thereunder and in accordance with the provisions of the Land Survey Act 1980 and the regulations made thereunder;  
 (z) the survey is correct in accordance with the provisions of the Land Survey Act 2008 and the regulations made thereunder and in accordance with the provisions of the Land Survey Act 1980 and the regulations made thereunder;

Surveyed by *Albert Stewart Wilder*  
 Date of Survey 11/05/05

Field Book Reference Pages  
 Estimated Correct

Approved as to Survey by *71605*  
 Land Information NZ on 19/05/05

Deposited by *71605*  
 Land Information NZ on 19/05/05

DP350755

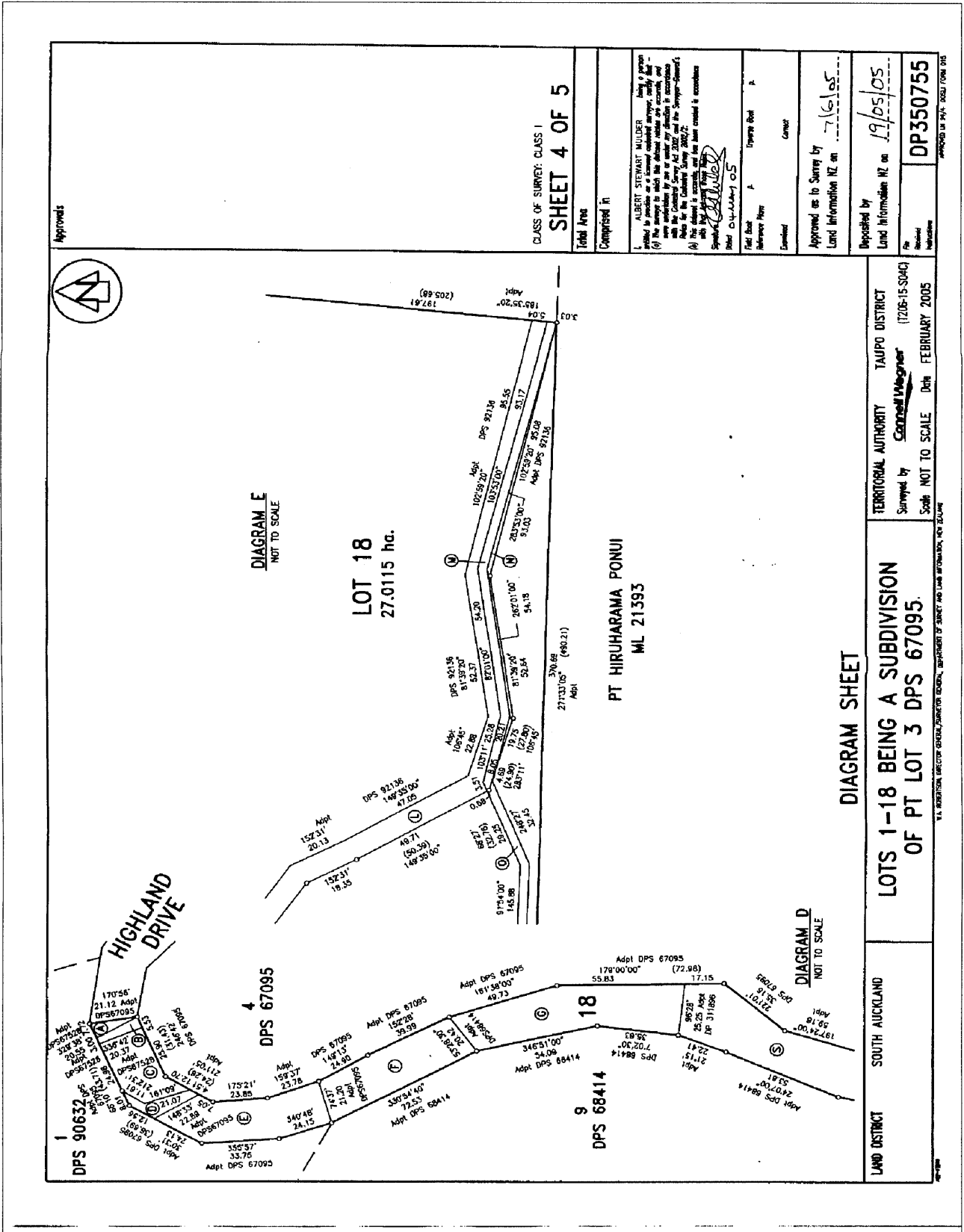
REGIONAL AUTHORITY TAUPŌ DISTRICT  
 Surveyed by *Connell Wagner* (1208-15-308)  
 Scale NOT TO SCALE Date FEBRUARY 2005

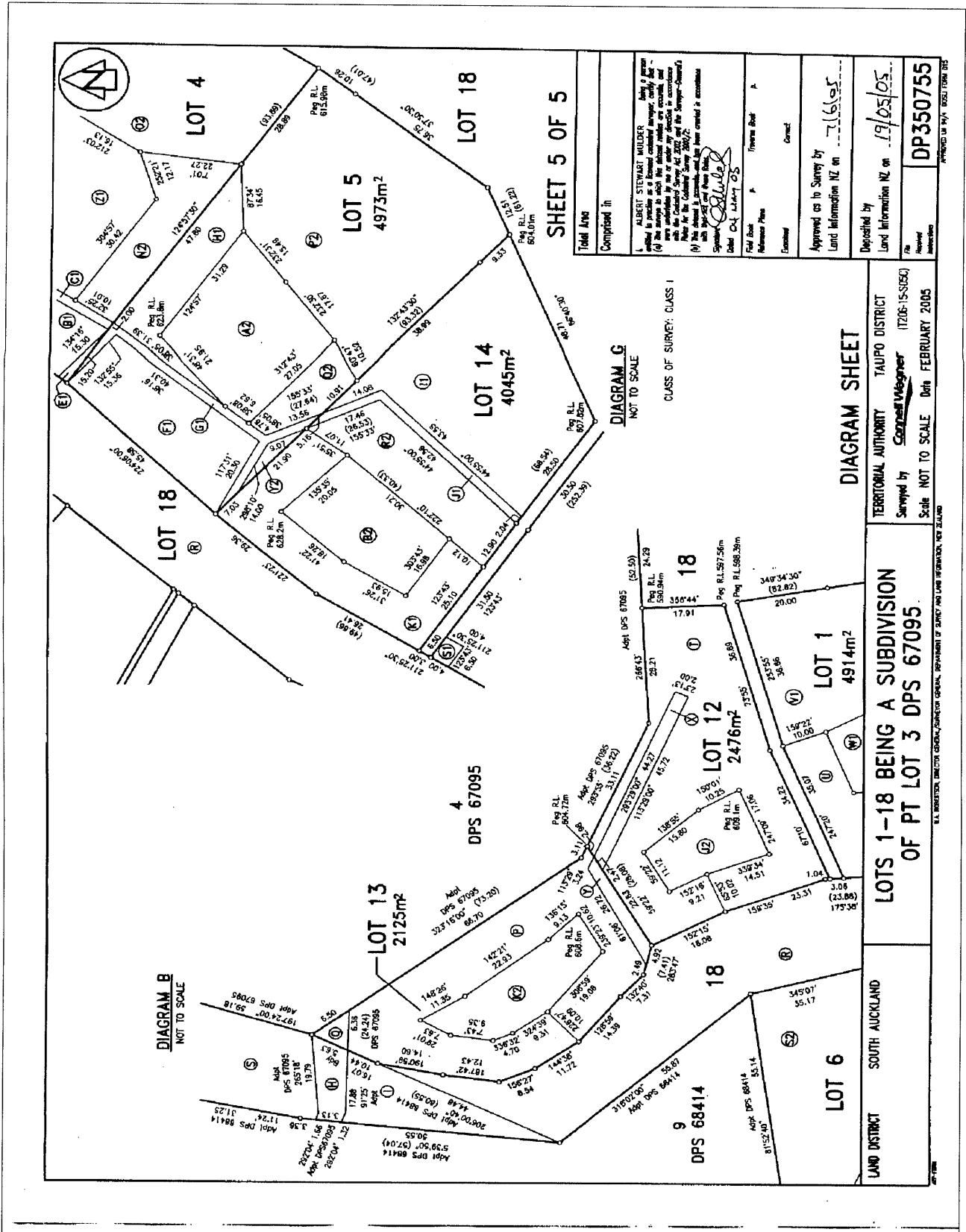
DIAGRAM SHEET  
**LOTS 1-18 BEING A SUBDIVISION OF PT LOT 3 DPS 67095**

LAND DISTRICT SOUTH AUCKLAND

APPROVED BY NZLS 00831 FROM 015

1. ALBERT STEWART WILDER GENERAL SURVEYOR, DEPARTMENT OF SURVEY AND LAND INFORMATION, NEW ZEALAND





Completed in		Albert Stewart Mulder	
Total Area		4973m <sup>2</sup>	
Class of Survey		CLASS 1	
Scale		NOT TO SCALE	
Deposited by		Albert Stewart Mulder	
Approved as to Survey by		[Signature]	
Land Information NZ on		19/05/05	
Deposited on		19/05/05	
Land Information NZ on		19/05/05	
File No.		DP350755	
Reference Plan		[Blank]	
Examined		[Blank]	

DIAGRAM SHEET  
 TERRITORIAL AUTHORITY TAUPU DISTRICT  
 Surveyed by *Geoffrey Wiegner* (17206-1S-0504)  
 Scale NOT TO SCALE Date FEBRUARY 2005

LOTS 1-18 BEING A SUBDIVISION  
 OF PT LOT 3 DPS 67095.

LAND DISTRICT SOUTH AUCKLAND